


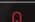
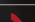
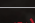


# FirePRO Series

PERSONAL THERMAL CAMERA FOR  
IMPROVED SITUATIONAL AWARENESS  
AND FIREFIGHTER SAFETY

CAMERA SPECS	FirePRO 200	FirePRO 300
 Resolution	200 x 150	320 x 240
 Field of View	27° x 35°	42° x 57°
 Durability	IP67, 2 meter drop	
 Detection	-20°C to 550°C (-4°F to 1022°F)	
 Imaging	Mixed Gain Mode with SV1	
 Flashlight	300 Lumen LED	

Seek  
thermal  
thermal.com



FirePRO 300

PN: FQ-AAAX

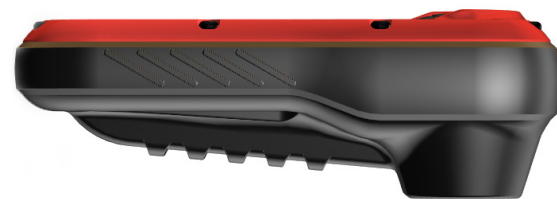
FirePRO 200

PN: FW-AAAX

Introducing the Seek Thermal FirePRO Series - the best innovation in personal thermal imaging. With two options to choose from, the FirePRO 200 and FirePRO 300, you can equip every firefighter with an affordable and lightweight thermal camera to enhance situational awareness and improve firefighter safety.

Featuring a high resolution of 320 x 240 for FirePRO 300 and 200 x 150 for FirePRO 200, our thermal cameras provide firefighters with the ability to regain orientation in low visibility or blackout conditions. Additionally, Seek's game-changing Mixed Gain technology allows firefighters to see detail in the hottest and coolest regions of the scene at the same time without freezing and switching modes. Investing in a personal thermal imaging camera is an investment in your personal safety.

Designed and Manufactured in the USA with Global Components. Thermal sensor designed and manufactured by Seek Thermal in Santa Barbara, CA USA.



## KEY FEATURES

**Made to endure and designed to be lightweight**  
IP67 waterproof with 2 meter drop durability and weights just 325 grams

**Mixed Gain with SV1 Technology**  
See the hottest and coolest regions of the scene simultaneously without freezing or switching modes; details enhanced with SV1

**Two options for sensor resolution**  
FirePRO 200: 200 x 150 | FirePRO300: 320 x 240

**Up to 6 hours of use on a single charge**  
Long lasting rechargeable battery ensures FirePRO is always ready

**Ergonomic 90° viewing angle**  
90° viewing angle makes pointing the camera as easy a cell phone

## BENEFITS

**Improve situational awareness**  
Visualize hazards invisible to the naked eye and navigate safely

**Find your way out in zero visibility conditions**  
FirePRO is your lifeline to regain orientation and reduce maydays

**Execute the mission faster**  
Quickly locate victims and hot spots when every second counts

**Reduce the potential for rekindles**  
Multiple firefighters can use Survey Mode during overhaul

**Redundancy**  
Serves as a redundant backup if the team's decision making TIC fails

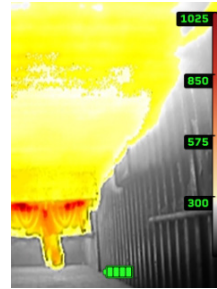
**TECHNICAL SUMMARY**

SPECIFICATIONS	FIREPRO 200	FIREPRO 300
Thermal Sensor	200 x 150	320 x 240
Field of View	27° x 35°	42° x 57°
Video Recording	No	Yes
Image Capture	Yes	
Protective Sensor Window	Yes	
Temperature Range	-4°F to 1,022°F (-20°C to 550°C)	
Operating Temp (no limit)	-4°F to 185°F (-20°C to 85°C)	
Operating Temp (5 min)	302°F (150°C)	
Operating Temp (1 min)	500°F (260°C)	
Frame Rate	> 25 Hz FastFrame	
IP Rating	IP67 Waterproof	
Impact Resistance	2 meter drop onto concrete	
Flashlight	300 Lumen LED	
Display	2.8" TFT 320 x 240 screen resolution	
Thermal Sensitivity	< 35 mK with SV1	
Viewing Angle	Ergonomic 90° viewing angle	
Imaging Modes	FIRE (with TI Basic & TI Basic +) and SURVEY	
Size: H x W x D	5.1 x 3 x 1.8 inches (130 x 76 x 46mm)	
Weight	0.7 lbs (325 grams)	
Battery Life	6 hours in thermal only 3.5 hours with flashlight on	

For support and user guides visit [thermal.com](http://thermal.com)

**IMAGING MODES**

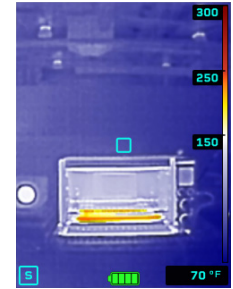
All modes use Mixed Gain with SV1 Image Optimization



**FIRE MODE**  
Using TI BASIC  
(Without Spot Temp)



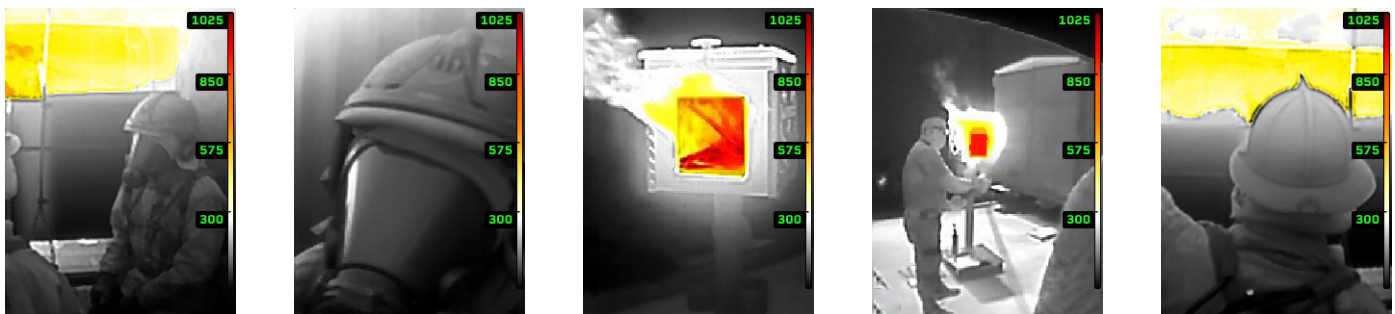
**FIRE MODE**  
Using TI BASIC+  
(With Spot Temp)



**SURVEY MODE**  
Using TI BASIC+  
(With Spot Temp)



**FIREPRO 200 SAMPLE IMAGES**



**FIREPRO 300 SAMPLE IMAGES**

