



EVERYTHING YOU LOVE ABOUT ATTACKPRO,
NOW WITH SURVEY MODE.

KEY CAMERA SPECS

| | | |
|--|---------------|---------------------------------|
| | Resolution | 320 x 240 |
| | Field of View | 57° x 42° |
| | Durability | IP67 waterproof, 2 meter drop |
| | Detection | -4°F to 1022°F (-20°C to 550°C) |
| | Imaging | Mixed Gain with SV1 |
| | Flashlight | 300 Lumen LED |



AttackPRO S Kit: FQ-PASX
5yr Enhanced Warranty: WA-5USATTACKPRO

Designed with firefighters, for firefighters, the AttackPRO™ S is the newest addition to the AttackPRO Series. It builds on the proven image quality, durability, and affordability of the original AttackPRO, with one key upgrade: **Survey Mode**—a powerful feature that enhances visibility during size-up and overhaul operations.

With high-resolution, mixed-gain pixel technology, AttackPRO S ensures clear detail across both high-heat and cooler scenes, helping you see fire and crew in a single, detailed image.

Each kit includes the camera, two batteries, and a charging dock—everything you need, ready to go.

Designed and Manufactured in the USA with Global Components.
Thermal sensor designed and manufactured by Seek in Santa Barbara, CA USA



KEY FEATURES

Mixed Gain with SV1 Image Optimization
See the hottest and coolest regions of the scene simultaneously without freezing or switching gain modes; details enhanced with SV1

Survey Mode
Survey Mode is optimized for lower temperature scenes to help identify hot spots and hidden threats during size-up and overhaul.

Durable, Waterproof Design
Durable and reliable design built with IP67 rating and 2 meter drop resistance

Wide, 57-Degree Field of View
Easily scan a large area to identify hazards or victims in seconds

Long-Lasting Rechargeable Battery
Greater than 6 hours of continuous thermal imaging

BENEFITS

Decision Making on Command
Direct Firefighters, water, and resources with expedited tactical precision

Robust Decision Making TIC
Equip every commanding officer with the first affordable decision making TIC

300 Lumen Integrated Flashlight
LED flashlight available at the touch of a button

Search and Rescue
Find victims and self-rescue faster with a reliable personal TIC

Execute 360 Size-ups & Overhaul Faster
When seconds count, a Seek decision-making TIC saves time and lives

TECHNICAL SUMMARY

| SPECIFICATIONS | DESCRIPTION |
|---------------------|--|
| Thermal Sensor | 320 x 240 (76,800 pixels) |
| Detection Distance | 12 inches to 1,000 feet |
| Field of View | 57° HFOV, 42° VFOV |
| Temperature Range | -4 to 1,022°F (-20 to 550°C) |
| Operating Temp | -4 to 131°F (-20 to 55°C) - no time limit up to 302°F (150°C) - max 15 min up to 500°F (260°C) - max 5 min |
| Frame Rate | > 25 Hz Fast Frame |
| IP Rating | IP67 Waterproof |
| Flashlight | 300 Lumen LED |
| Display | 3.5" Color with Corning® Gorilla® Glass |
| Thermal Sensitivity | < 35 mK with SV1 |
| User Interface | On device 2 tactile button operation |
| Temp. Display Scale | Fahrenheit or Celsius |
| Image modes | FIRE (TI Basic & TI Basic+) and SURVEY |
| Storage Media | NA |
| Battery | >6 Hours Thermal Imaging (w/o flashlight); >3hrs (with thermal AND flashlight) |

300 LUMEN LED LIGHT



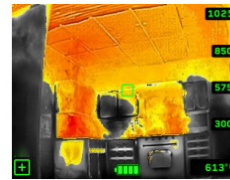
Seek AttackPRO S combines powerful thermal insight and a bright LED flashlight in an intuitive, two button interface.

MODES



TI BASIC

Maintain your situational awareness with a simple and decluttered display showing grayscale and colorized regions



TI BASIC+

Enhance your tactics with a spot temp readout while still maintaining grayscale and colorized regions

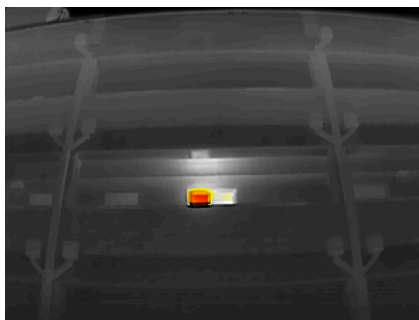


SURVEY MODE

Investigative mode with early colorization at 65C (150F) ideal for size up, smells & bells, and overhaul

For support and user guides visit thermal.com

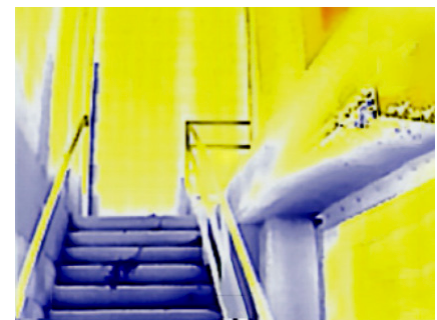
THERMAL APPLICATIONS



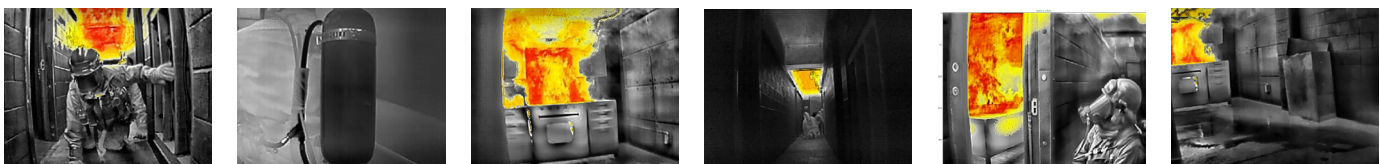
360 SIZE UP



FIRE ATTACK



OVERHAUL



Seek more at thermal.com

6300 Hollister Ave, Santa Barbara, CA 93117

Seek Thermal engineers, designs and manufactures high quality thermal imaging products and core platforms for consumer, commercial, and heat sensing IoT data applications. With headquarters in Santa Barbara, California, the global hub of thermal imaging innovation, the company has developed breakthrough thermal imaging camera cores that will enable a range of affordable products for use at home, work and play. For more information visit thermal.com and follow #seekthermal on Instagram and @seekthermal on Twitter.

SKU: FD-SAA



TECHNICAL SUMMARY

| SPECIFICATIONS | DESCRIPTION |
|---------------------|--|
| AC INPUT | 100-240 VAC 50/60 HZ, 0.5 A |
| SUPPLY VOLTAGE | 5VDC |
| POWER RATING | 10W |
| ENVIRONMENTAL | INTENDED FOR INDOOR USE |
| CHARGE TIME | 6 HOURS |
| INCLUDED IN THE BOX | DESKTOP CHARGER CRADLE POWER SUPPLY INCLUDING AC PLUGS FOR US, EU, UK |

For support and user guides visit thermal.com

Seek more at thermal.com

6300 Hollister Ave, Santa Barbara, CA 93117

Seek Thermal engineers, designs and manufactures high quality thermal imaging products and core platforms for consumer, commercial, and heat sensing IoT data applications. With headquarters in Santa Barbara, California, the global hub of thermal imaging innovation, the company has developed breakthrough thermal imaging camera cores that will enable a range of affordable products for use at home, work and play. For more information visit thermal.com and follow #seekthermal on Instagram and @seekthermal on Twitter.

SKU: FA-BAA



TECHNICAL SUMMARY

| SPECIFICATIONS | DESCRIPTION |
|-----------------------------|---|
| BATTERY MATERIAL | LITHIUM ION |
| NOMINAL VOLTAGE | 3.63 V |
| NOMINAL CAPACITY | 4900 mAh |
| OPERATING TEMPERATURE RANGE | DURING DISCHARGE: -20°C TO 60°C DURING CHARGING: 0°C TO 45°C |
| WEIGHT | 115g |
| SIZE | 170 X 45 X 43 mm |
| COMPATIBLE WITH | FQ-PPAX FQ-PPNX FQ-PAVX FQ-PPSX |

For support and user guides visit thermal.com

Seek more at thermal.com

6300 Hollister Ave, Santa Barbara, CA 93117

Seek Thermal engineers, designs and manufactures high quality thermal imaging products and core platforms for consumer, commercial, and heat sensing IoT data applications. With headquarters in Santa Barbara, California, the global hub of thermal imaging innovation, the company has developed breakthrough thermal imaging camera cores that will enable a range of affordable products for use at home, work and play. For more information visit thermal.com and follow #seekthermal on Instagram and @seekthermal on X.